

# 800-M-TOW-10 / BASIC 10" AUX STANDOFF TOWER MOUNT

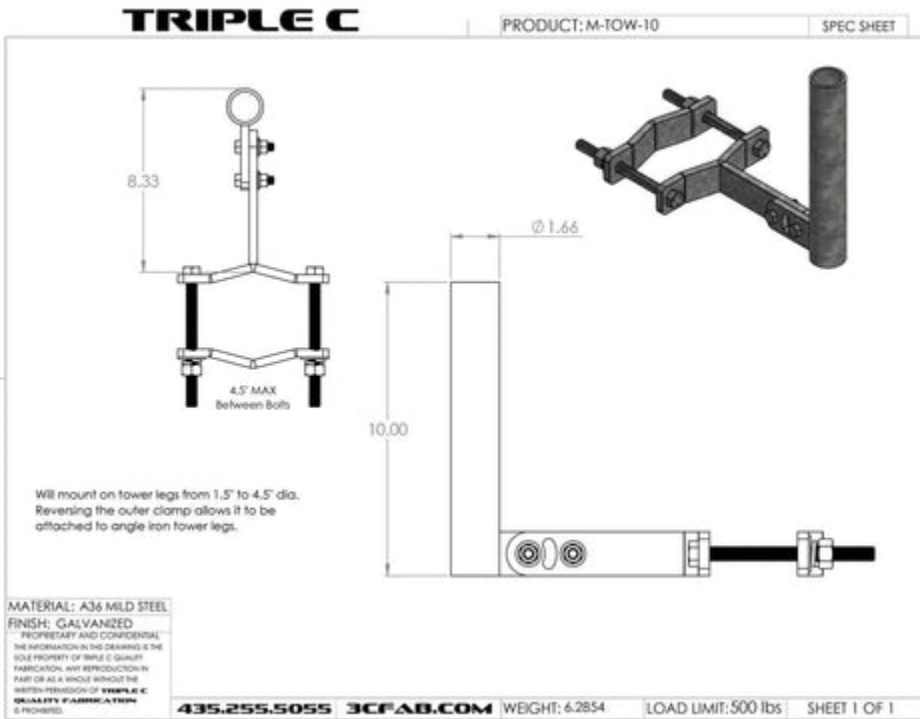
Basic AUX Standoff Tower Mount - 10 Inch

The Tower Mount is designed to securely mount Reflector Dishes, GPS Antennas, Yagi Antennas or any other device to a tower leg or pipe. The tilt feature on the Mount allows you to aim your device at the desired angle.

PN: 800-M-TOW-10

Weight: 6.3 lbs

Dimensions: 10" × 10" × 7"



(Click the spec sheet above to expand.)

# FEATURES & APPLICATIONS

- 100% Solid Steel
- Rated for 500lbs of force
- All parts are hot dip galvanized for long life
- Provides a secure tilt from 45 degrees up and down
- Can be locked straight or at a tilt
- 100% Manufactured in the USA
- Mount GPS antennas, CPE, Access Points

Will mount on tower legs from 1.5" to 4.5" diameter.

Reversing the outer clamp allows it to be attached to angle iron tower legs.

Mount pipe is 1.66" outer diameter. Provides a 8.5" minimum standoff.

800-M-TOW-10

Email [sales@3cfab.com](mailto:sales@3cfab.com) to inquire about distributor pricing.